



■ greenius®

LED-TRACKLIGHT



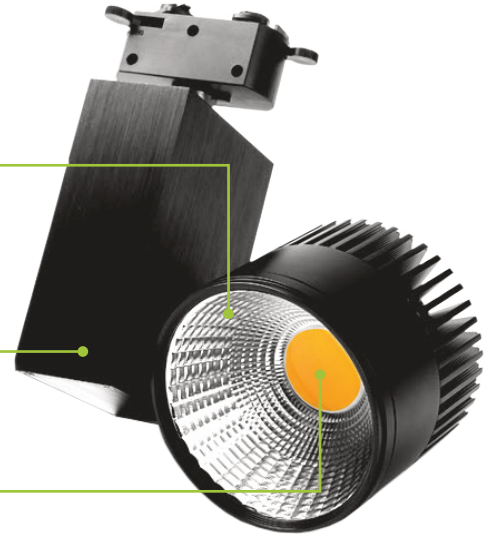
LED-TRACKLIGHT



available in different colors



different beam angles



High color rendering



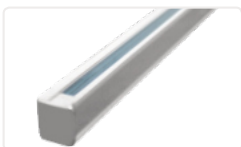
Our energy-efficient LED track spotlight (3-phasis) offers maximum flexibility with a rotation and inclination angle of 350°. It can be attached to all common rail systems and aimed specifically at a highlight in the room.

PRODUCT DATA

| Power | 10 Watt | 20 Watt | 30 Watt |
|-------------------------------------|---|-----------------------|-----------------------|
| Product dimensions | 130 x 128 x 80 mm | 160 x 198 x 89 mm | 160 x 198 x 89 mm |
| Luminous flux | ≤1,300 Lumen | ≤ 2,600 Lumen | ≤ 3,900 Lumen |
| Efficiency | ≤130 Lumen / Watt | | |
| Beam angle | 30° 50° | 20° 30° 40° 60° | 10° 30° 40° 60° |
| LED Chip Brand type | Epistar COB | | |
| Number of LEDs | 1 pcs. | | |
| LED Driver Brand Type | Tridonic | | |
| Material: housing cover | Aluminium Glass | | |
| Colour Rendering Index (CRI) | > 90 Ra | | |
| Useful life Failure rate | > 50.000 hrs. L90B10 | | |
| IP-Classification | IP40 | | |
| Options | TRIAC DALI 1-10 V | | |
| Ambient temperature (ta) | -30 °C to +60 °C | | |
| Correlated Colour Temperature (CCT) | warm white: 3K neutral white: 4K daylight: 5K daylight+: 6K | | |
| Deviation of the colour adjustment | SDCM <3 | | |
| Certification (LED / Driver) | CE (LVD) CE (EMC) Rohs (2011/65/EC) TÜV ... | | |
| Voltage | 180 - 270 VAC 50/60 Hz | | |
| Item number | TL10 | TL20 | TL30 |

ACCESSORIES

Rails



Suspension



Connectors



Flex-Connector

