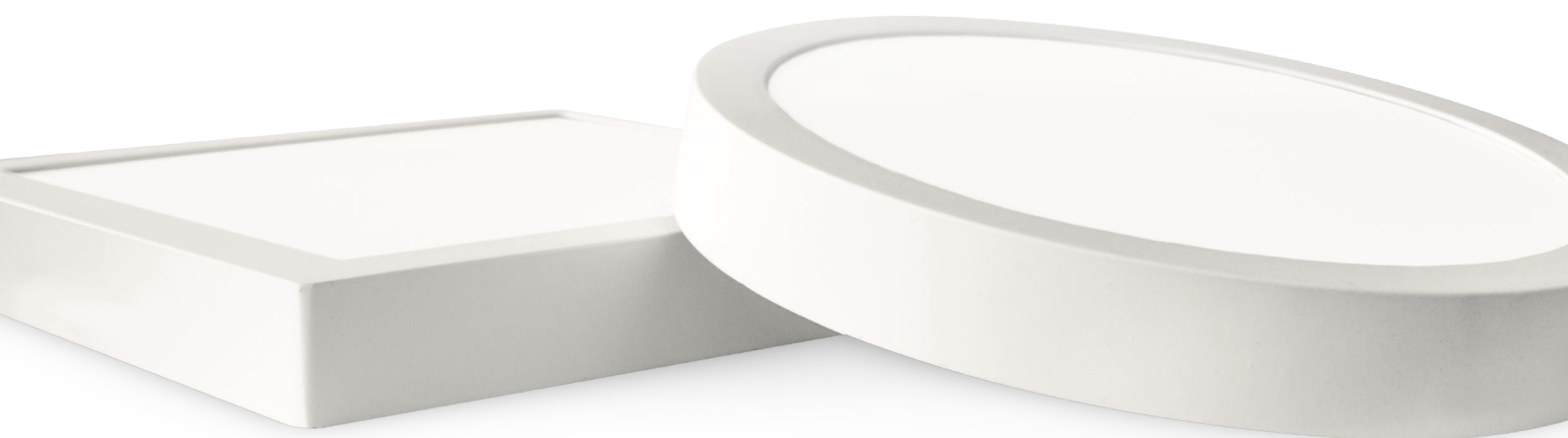




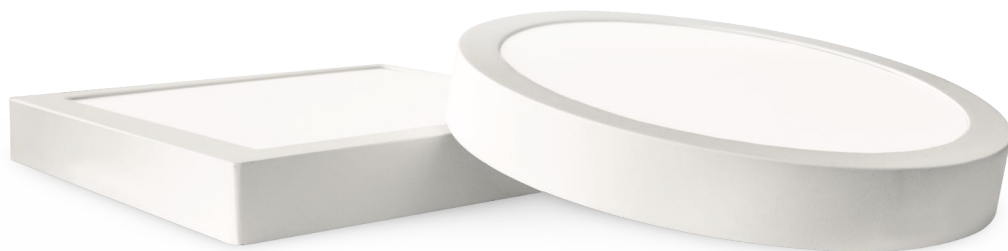
■ greenius®

LED-PANEL

FRAME



# LED-PANEL | WITH FRAME



The ultra-flat and space-saving surface-mounted luminaires with an integrated frame provide homogeneous and uniform general lighting in a simple and classic-modern design: suitable for wall and ceiling mounting, available in different sizes. Also in a square version on request.

## PRODUCT DATA

Power	≤ 24 Watt	≤ 48 Watt
Product dimensions	Ø 300 x 40 mm	Ø 600 x 40 mm
Efficiency	≤ 120 Lumen / Watt	
Beam angle	120°	
LED Chip Brand   type	Epistar   SMD2835	
Number of LEDs	120 pcs.	240 pcs.
<b>i</b> LED Driver Brand   Type	must be ordered separately according to the required capacity	
Material: housing   cover	Aluminum   PS (polystyrene)	
Colour Rendering Index (CRI)	> 80 Ra	
Useful life   Failure rate	> 50,000 hrs.   L80B10	
IP-Classification	IP40	
Options	DALI   TRIAC-Dimmable   1-10 V	
Ambient temperature (ta)	-25 °C to +50 °C	
Correlated Colour Temperature (CCT)	warm white: 3K   neutral white: 4K	
Deviation of the colour adjustment	SDCM <5	
Certification (LED / Driver)	CE (LVD)   CE (EMC)   Rohs (2011/65/EC)	
Voltage	27 - 42 VDC   ≤ 600 mA	27 - 42 VDC   ≤ 1.200 mA
Item number	PR30	PR60

## LOGISTICS DATA

Product weight	900 g	2,700 g
Packaging unit	10 pcs.	2 pcs.
Weight packing unit	10.8 kg	8.70 kg
Dimensions packing unit	47 x 35 x 35 cm	67 x 17 x 72 cm

## ACCESSORIES

Suspension



P-4Wires

**i**

Driver



Please select separately  
See data sheet "LED-Driver"